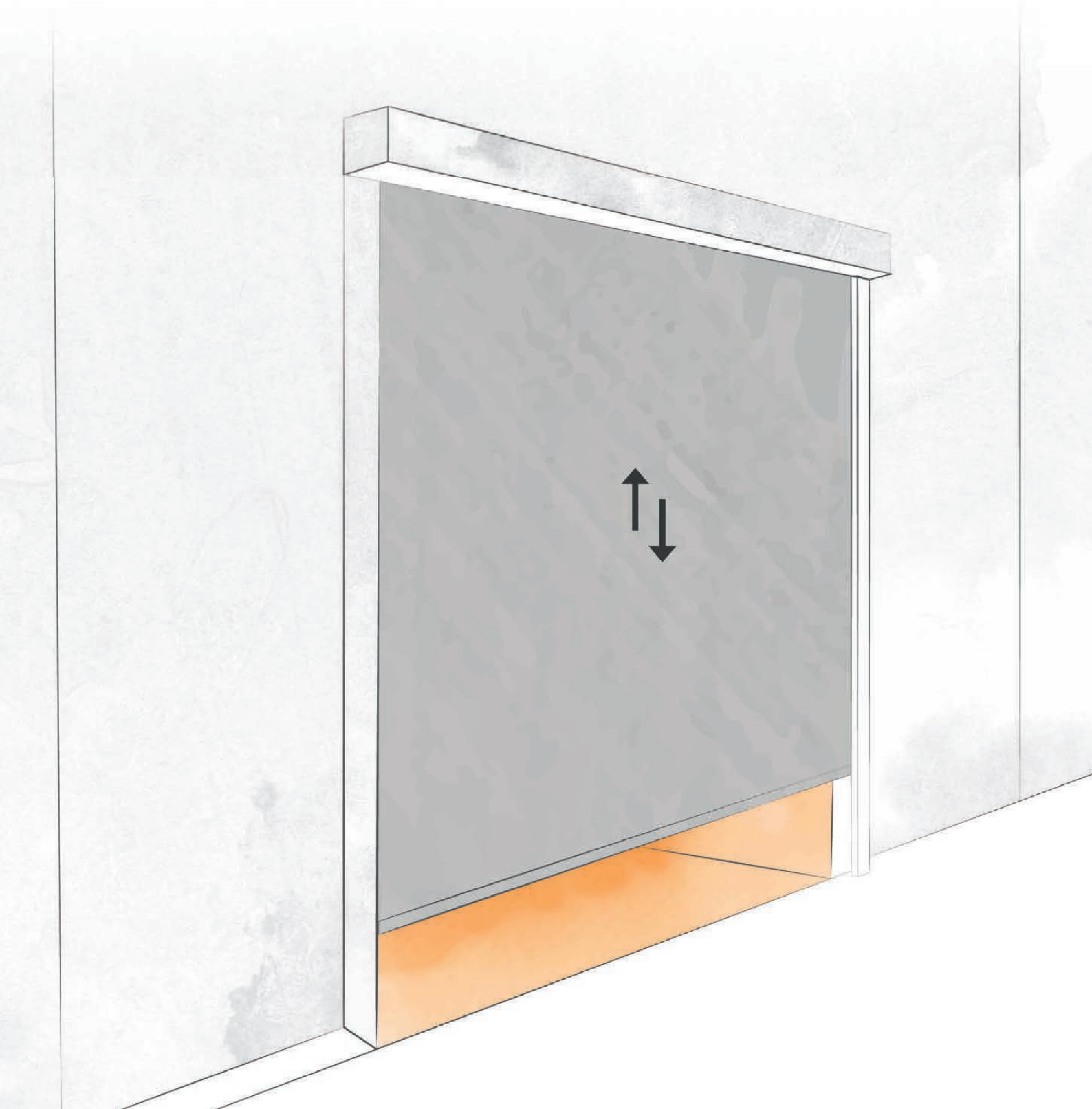


# Fire & Smoke Curtain




Model: EFS-FC



## Description

The fire and smoke curtain is activated in case of emergency when there is an indication of fire in the building. The curtain drops down from the ceiling and creates a fire barrier, allowing, among other things, a life-saving escape route. EFS-FC system is also rated to UL 1784 according to the requirements of smoke and draft control assemblies defined in NFPA 105.

Fire curtains provide an efficient solution for closing openings in the building, thereby preventing the spread of fire. The primary uses of fire curtains include:

- Entrances and exits from parking lots
  - Wide doors in manufacturing halls and logistics centers
  - Elevator openings
  - Atrium spaces in public and commercial buildings
  - Large spaces, like train stations and shopping centers
- ✎ The EFS-FC fire and smoke curtain is manufactured by EFS Engineering, offering a complete technical support
- ✎ The curtains have been tested and approved by  (Underwriters Laboratories)




## Tested and certified to

- ✎ UL 10D
- ✎ EN 1634-1
- ✎ UL 1784
- ✎ NFPA 105

## Fire Integrity

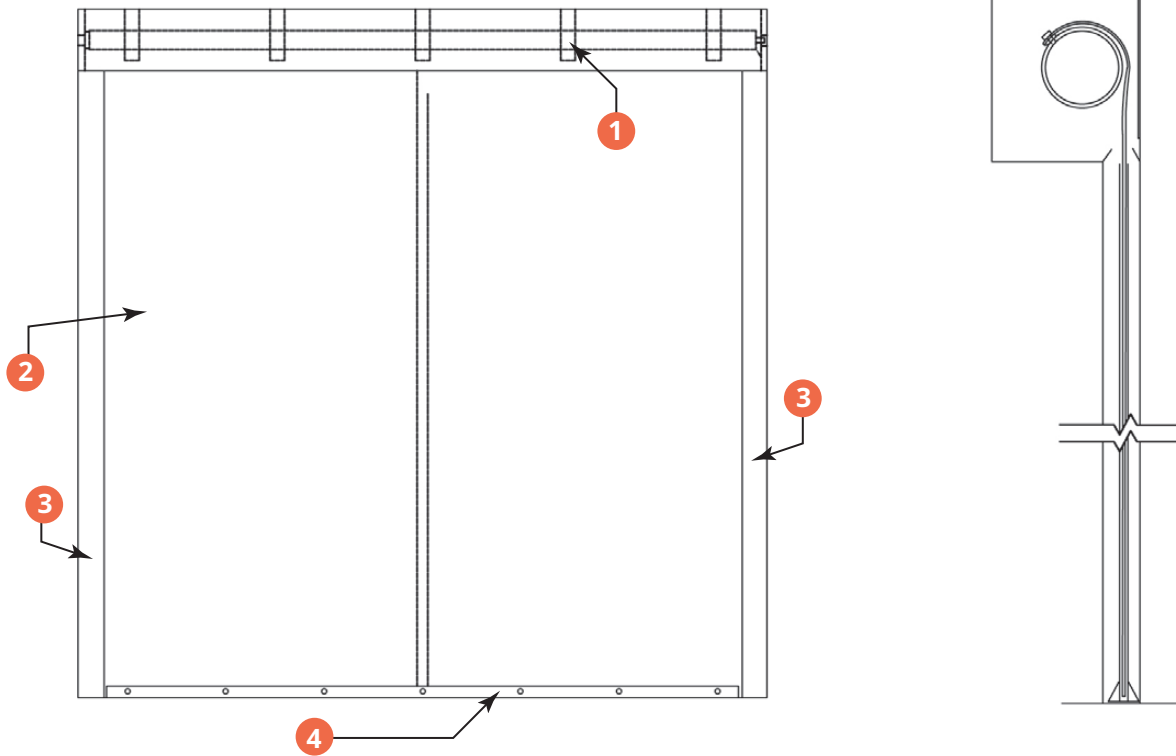
Up to 120 minutes

## Specifications

<b>Fabric</b>	Fire resistant fabric, reinforced with stainless steel threads
<b>Motor</b>	24 VDC, installed in the upper barrel
<b>Side Guides</b>	Steel 2.5 mm, galvanized or powder coated
<b>Bottom bar</b>	Steel 2 mm, galvanized or powder coated
<b>Head Box</b>	GI 2mm, galvanized or powder coated
<b>Total Weight</b>	≈20 Kg /Sqm.
<b>Classification \ Standards</b>	UL 10D, EN 1634-1, UL 1784, NFPA 105
<b>Certified by</b>	UL 

\* Refer to UL Directory for detailed information

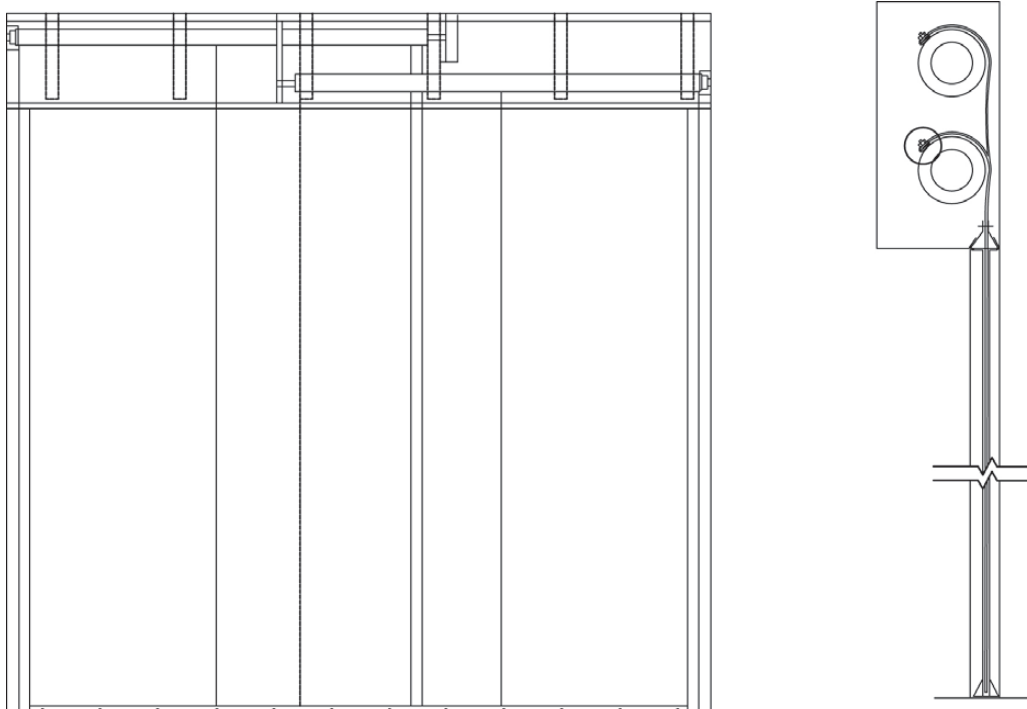
## Single Barrel Curtain



### Legend

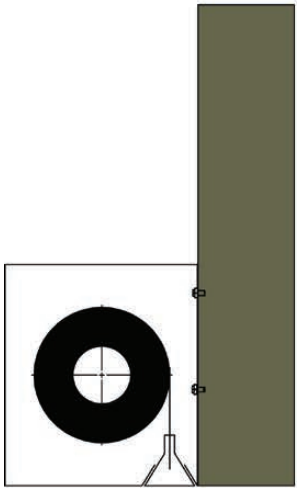
<b>1</b>	Head Box and Motor	<b>3</b>	Side Guides
<b>2</b>	Fire Proof Fabric	<b>4</b>	Bottom Bar

## Multi Barrel Curtain

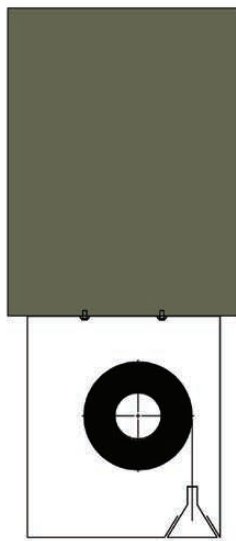


## Installation Options

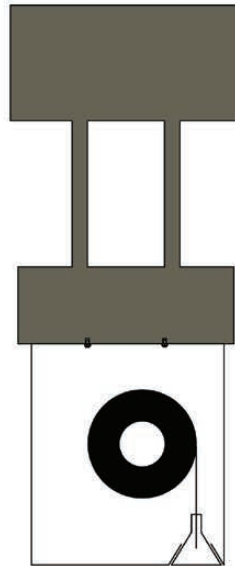
### Head Box Installation



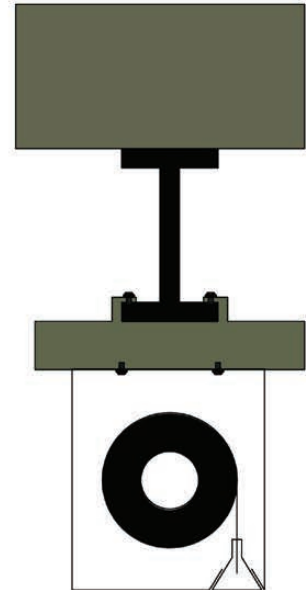
Wall fixing



Slab fixing

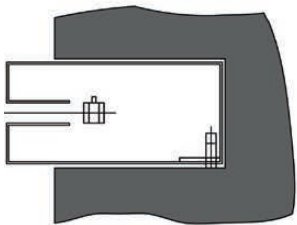


Drop rods fixing

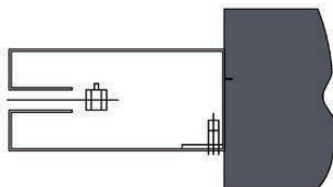


I-Beam fixing

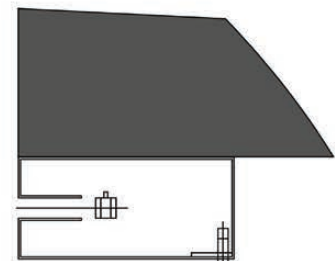
### Side Guides Installation



Side guide-inside the wall



Side guide-back mounting



Side guide-side mounting



## Projects:

- Amazon
- Toyota
- Swissport
- IKEA
- Intel
- Microsoft
- Wix
- Decathlon
- General Electric
- SAP
- Cinema City
- Monday.com



**EFS Engineering is an esteemed manufacturer specializing in fire protection products.** The company places a strong emphasis on quality, leveraging technical expertise in both the development and manufacturing processes of fire protection products and systems. Our range of products has undergone thorough testing, adhering to international standards:

- Fire and Smoke Curtains: UL10D, UL 1784, NFPA 105, EN 1634.
- FlameWrap and Ductz+ Fire Resistant Duct Wrap: ASTM E2336, UL 2221, ULC S144, EN 1366-1, EN 1366-8.

Our products have successfully passed stringent tests conducted by certification bodies and independent international laboratories. They proudly bear prestigious quality marks in the realm of fire safety, including UL and ETL. Furthermore, EFS Engineering holds ISO 9001 certification, affirming our commitment to maintaining high standards in quality management.